

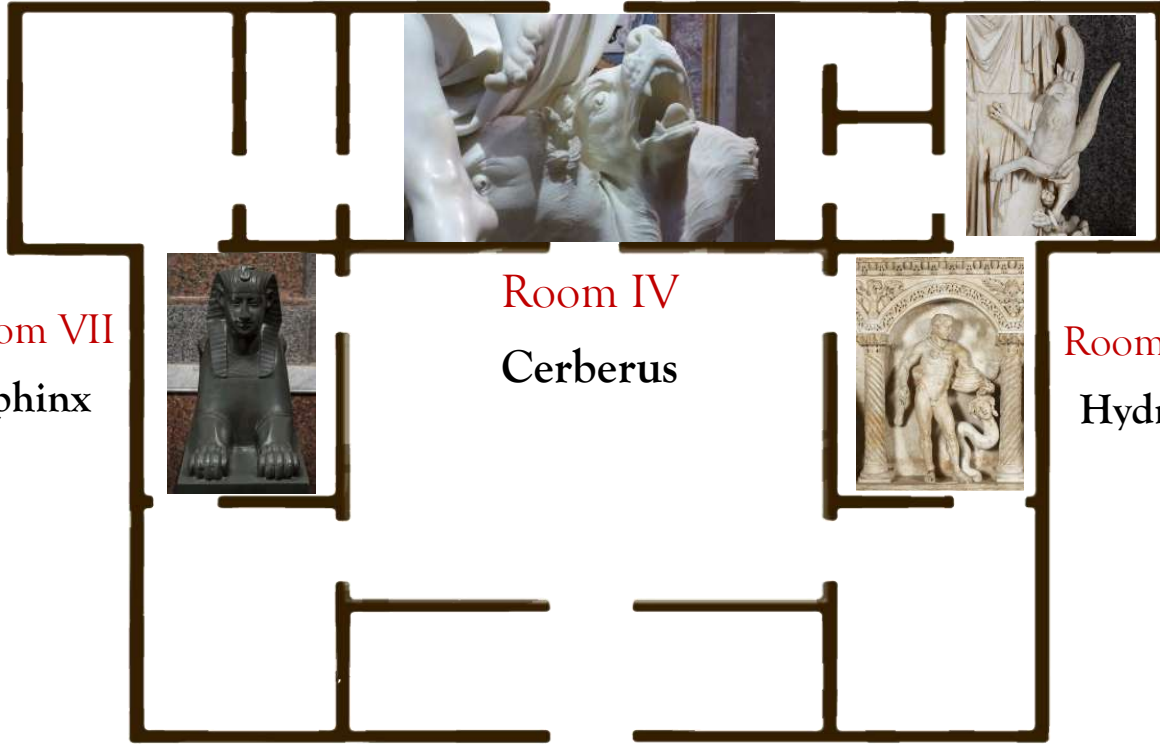


**EXCUSE ME,
HAVE YOU SEEN
A DRAGON?**

Fantastic beasts and where to find them at the Borghese Gallery

These are some of our fantastic beasts that you can find at the

SCULPTURE FLOOR



Room VII
Sphinx



Room IV
Cerberus



Room II
Hydra

Room III
Griffin



Some information on these creatures and advise on how to behave



CERBERUS

is Pluto's three-headed watchdog. He barks at anyone who comes too close to his home, the

Underworld. He gets particularly angry when someone tries to escape from there. Have you seen those teeth? I would not move closer to pet him!

I present you the **SPHINX**:

she is a creature with the head of a woman and the body of a lion that can be found especially in Egypt. She loves to ask riddles! The one she does the most is: "Which creature has one voice and is born with four legs, grows with two and then grows old with three?"



The **GRIFFIN** is an animal with the



head and wings of an eagle and the body of a lion. Historically, it's a symbol of strength and bravery. In fact, it was often used on noble families' coats of arm. Here is represented together with

Apollo, whose precious treasure he kept.

This is the **HYDRA**, an horrible poisonous snake of Greek mythology that was defeated by Hercules with the help of his friend Iolaus. If you ever see one, do not cut off her head because two new heads will regenerate in its place and that would mean trouble!



GALLERIA
BORGHESE



Here are others creatures! You will find them in the
PAINTING GALLERY

Room XIX
Pegasus



Room XI
Capricorn



Room IX
Unicorn



Room X
Plumed
camel

Some information on these creatures and advise on how to behave



Surely it's not the first time you have seen **PEGASUS**, the famous winged horse of Greek mythology. Did you know that it was ridden by two heroes? First by Perseus when he saved Andromeda and then by Bellerophon to kill the chimera. Unfortunately, you can only mount it if you have golden reins!

The **UNICORN** is a magical horse as well, probably the rarest one. Usually he is a symbol of wisdom and purity. A long time ago people believed that his horn could cure venom. Be kind if you see him, because he gets close only to good-hearted people.



Based on a myth, the **CAPRICORN** is nothing more than the God Pan that shapeshifted into a goat to flee an assault! Terrified, he threw himself in a river where his lower body, touching the water, was transformed into a fish. According to others, she is Amalthea, the goat that suckled the infant Zeus.



What is this? A **PLUMED CAMEL**? Actually, we don't know anything about this creature, because it was imagined by the author of this painting. Which could be its name? Where does it come from? Why does it have bird legs? What do you think?



...AND THEN THERE ARE THE DRAGONS

GALLERIA
BORGHESE



In the museum are hidden many **DRAGONS!**

And there is a reason why:

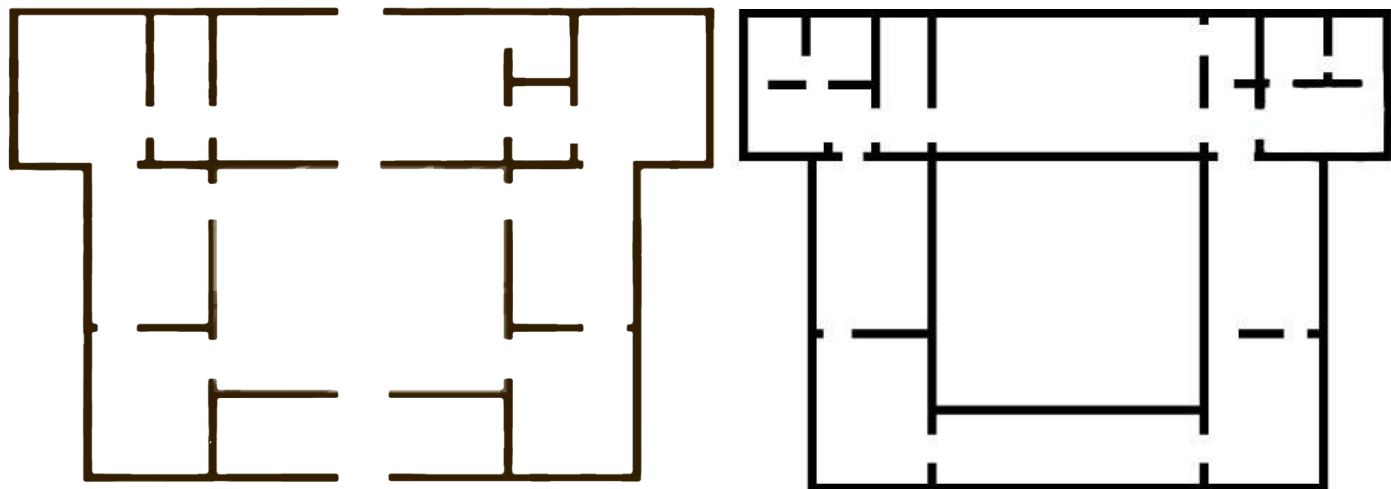
The dragon, with the eagle, is the crest of the Borghese family!



Here are some of the dragons you can see in the rooms. Can you find them all?



Mark on these maps where you find the fantastic beasts and the dragons



SCULPTURE FLOOR

PAINTING GALLERY

... And if there are some of them that are hiding really well, try to ask:

EXCUSE ME, HAVE YOU SEEN A DRAGON?

GALLERIA
BORGHESE



We have show you some of the magical creatures that can be seen at the Borghese Gallery,
Now it's your turn! How could it be your

FANTASTIC BEAST?

GALLERIA
BORGHESE

